

Apogee 2300

ENRICH YOUR DIAGNOSTIC EXPERIENCE



SIUI

High performance guarantees all-found capability for general purpose

The portable color Doppler Apogee 2300 is endowed with SIUI's core technology to conduct excellent image performance with surprising processing speed. Equipped with self-developed electronic transducers including the special probe groups, and comprehensive application solutions, it proves its clinical talent in various types of applications, including but not limited to traditional ultrasonic diagnosis, OP, anesthesiology, MSK and neonatology. Ergonomic compact design not only employs simple and convenient operation workflow, but also boasts high extensibility. All-round capability ensures Apogee 2300 your perfect choice no matter for ready-to-go or bedside.





Daily diagnosis relies on simple and smart workflow

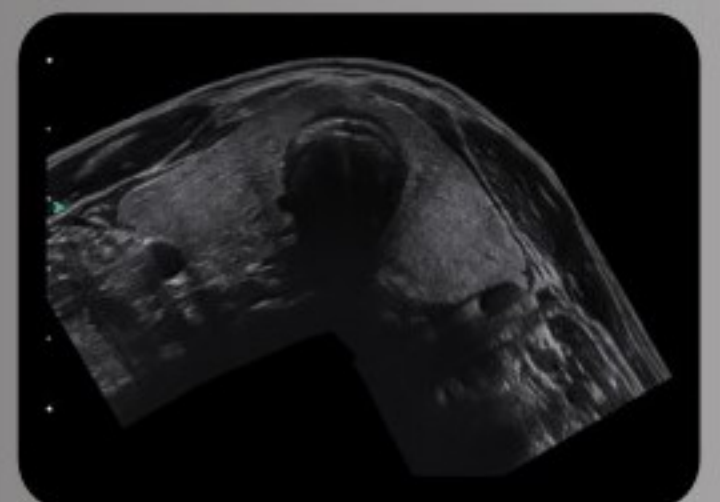
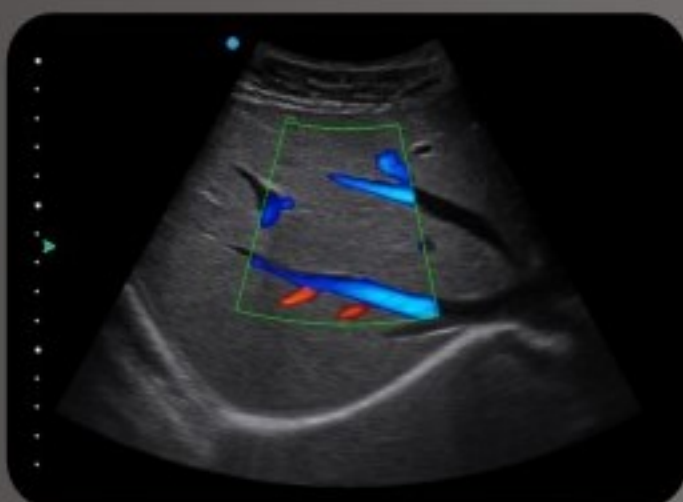
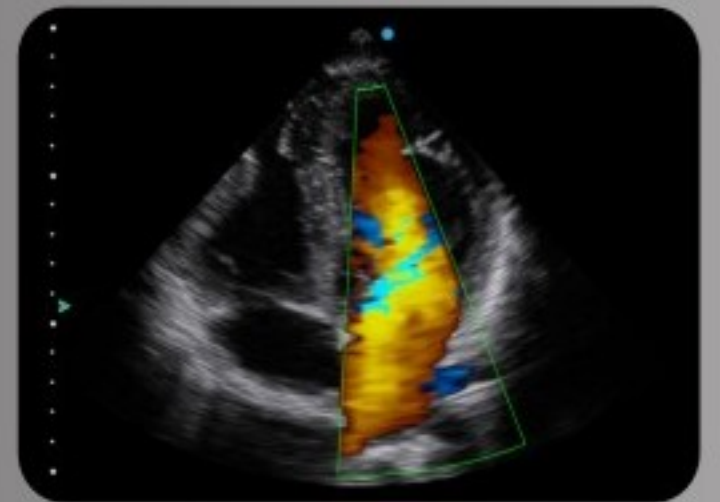
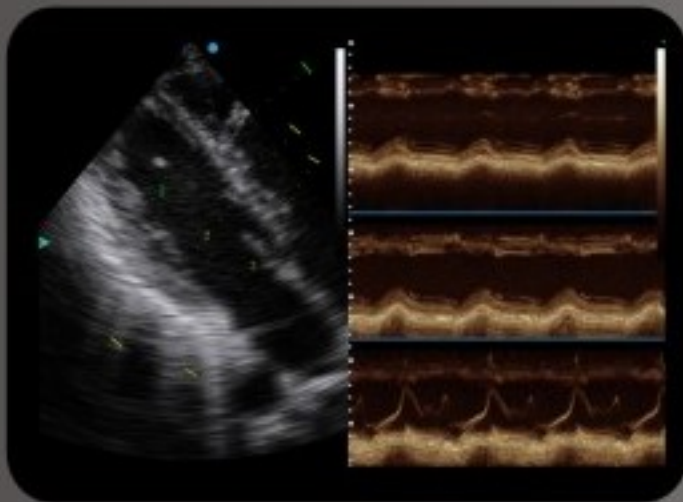
- Smarchive enables to edit and transfer patients' information and images, available for remote diagnosis
- Complete and professional measurement package across applications fulfills different exam types
- User-defined setting allows customized your preferred measure items and their sequence
- Professional report system presents detailed and dedicated information according different exam types



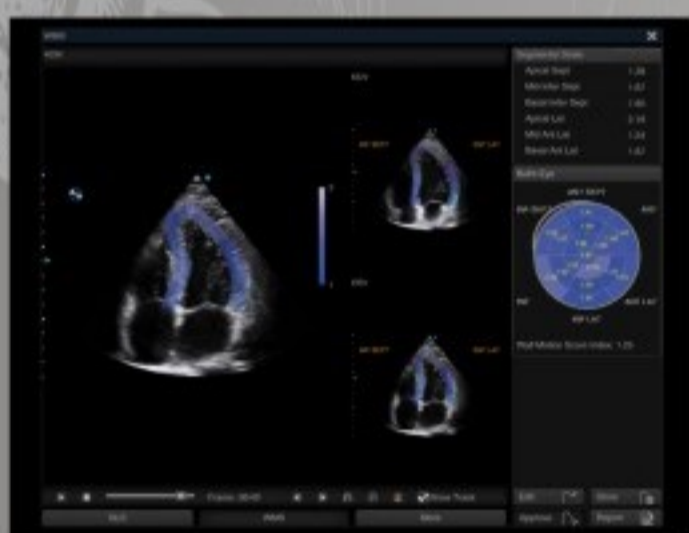
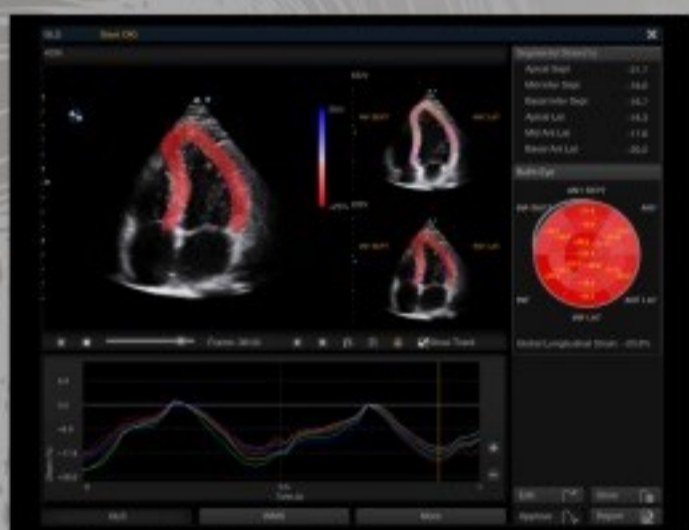
Diagnosis confidence comes from promising image quality and capability

Thanks to the advanced and continuously updated processing technology, the image performance of Apogee 2300 always keeps ranking in its class. The latest technology contributes to reliable image quality with higher resolution and optimized processing speed. All-round application packages render abundant clinical solutions. Rich probe groups empower all kinds diagnosis for general purpose.

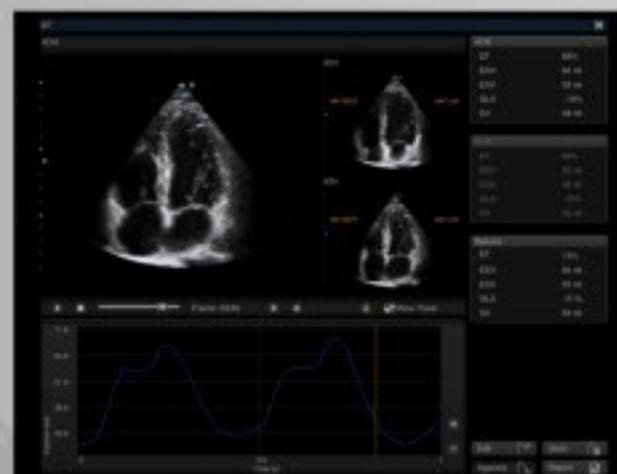
IMAGE GALLERY



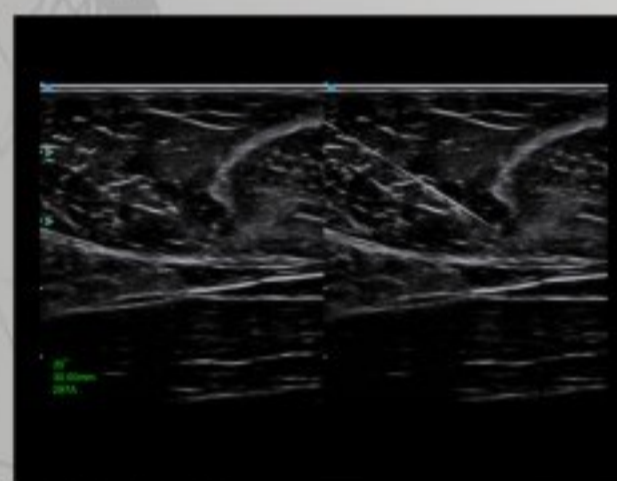
SIUI Auto SG is a quantitative assessment tool for global and segmental wall motion analysis based on cardiac strain imaging. It provides fully automated and reproducible results that allow clinicians to analyze and monitor subclinical changes over time.



SIUI Auto EF is a fully automatic measurement tool used to measure the Left Ventricle global Ejection Fraction.



Needle enhancement increases the needle visibility and enhances the needle tip, so as to offer the reliability and confidence to the clinicians.



User-friendly design and accessories refresh your exam experience

15-inch high resolution tilting monitor to accommodate your viewing preferences

Detachable lithium battery to facilitate your exam in power limit environment



Built-in light for keyboard and backlit control panel to comfort your eyes when scanning

Optional accessories to further extend your exam facility: trolley, probe extender, backpack, carry case etc.

40 SINCE 1978 YRS



Shantou Institute of Ultrasonic Instruments Co., Ltd.

HEADQUARTERS:

Shantou Institute of Ultrasonic Instruments Co., Ltd.
Add: No.77, Jinsha Road, Shantou 515041 Guangdong, China
Tel: 86-754-8825 0150 Fax: 86-754-8825 1499
E-mail: siui@siui.com

HONG KONG OFFICE:

Shantou Institute of Ultrasonic Instruments (HK) Co., Ltd.
Add: Room 2101, Tung Chiu Commercial Center
193 Lockhart Road, Wanchai, Hong Kong
Tel: 852-2891 6722 Fax: 852-2891 6723

www.siui.com

