

Apogee 2100

AFFORDABLE VERSATILITY



SIUI



Doctors limited with budget now have a perfect choice. Apogee 2100, which is endowed with promising performance across different applications, will provide you with affordable versatility.

Promising performance from advanced technology

MFI

By reducing signal distortion and eliminating unwanted noises, it renders premium images with outstanding resolution, high contrast and enhanced penetration.

Xbeam

By emitting ultrasonic beams from different angles, XBeam reduces the dependence from receiving angles to create images without compromise.

Nanoview

By reducing noises and artifacts, Nanoview is able to present tiny lesions in soft images with distinct tissues and enhanced edge, helping to offer reliable diagnostic results.

VS Flow

VS Flow significantly upgrades the sensitivity and resolution of blood flow which helps doctors to maximize the clinical application value.

Convenient workflow facilitates efficiency

- Intuitive interface with clear layout
- Smarchive for efficient patient management
- Professional clinical diagnosis and report system
- Professional general application measurement package available for preset and edit
- DICOM 3.0 for data management and analysis

Compact design enables flexibility

- 15-inch high resolution monitor
 - Wide tilting angle monitor
- Backlit keyboard with adjustable luminance
 - Detachable battery
- Dual active probe connectors
 - Various external interfaces
- Compact and ergonomic design with light weight
 - Special designed trolley available for mobility



Versatility across different applications



C3LC



C6LN



C5LN



P3FN



V6LN



U5LN



L8LN



L8LN

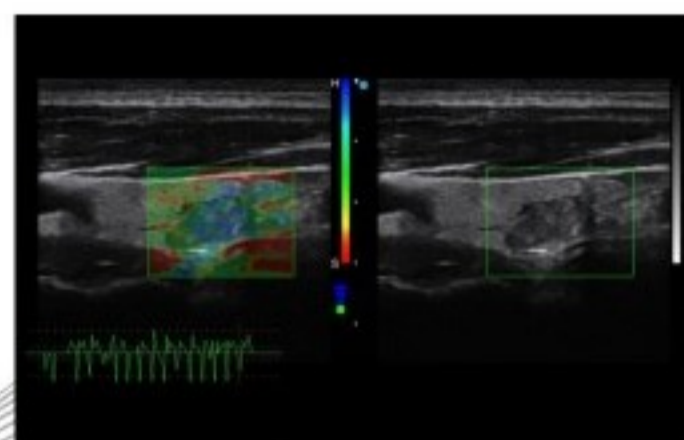
4D Pro

The system supports abdominal volumetric probes as well as a trans-vaginal volumetric probe, to obtain 3D/4D images both in obstetrics and gynecology application, providing more detailed and complete volumetric information. 4D Pro includes easy and efficient functions like nSlice, Q-Cut, Any Cut to enable quick and reliable diagnosis.



Elastography

Elastography is adopted to visualize the stiffness of tissues in real time by delivering an external compression on the tissues. Stiffness of the tissues can be clearly identified by color codes.



Panoscope

Extending wider view for doctors to scan large area tissue, the system particularly allows doctors to monitor the scanning quality via simultaneous display of B mode/ Panoramic mode.

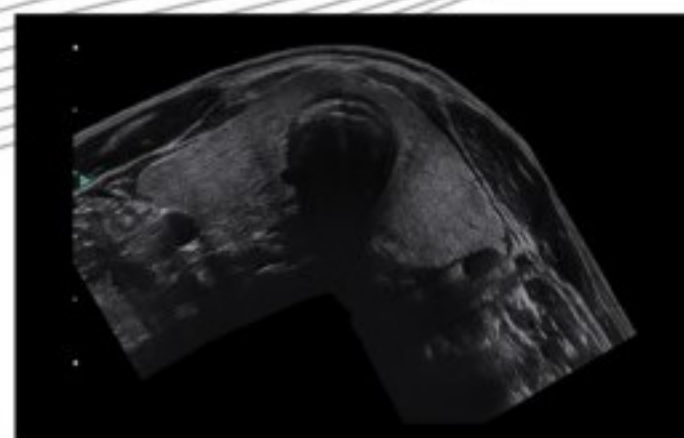
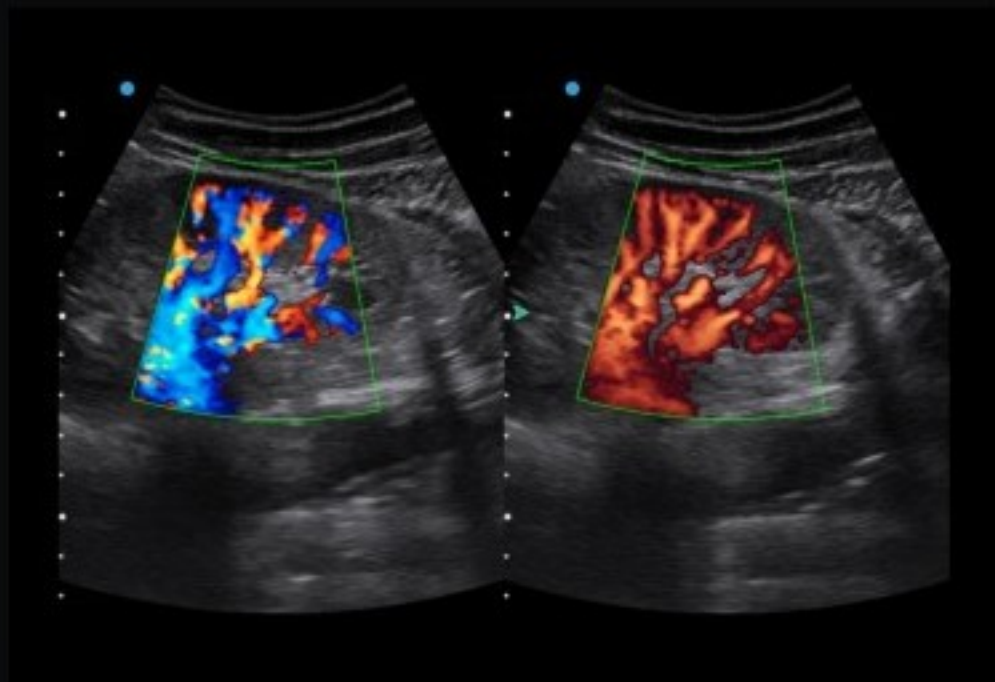


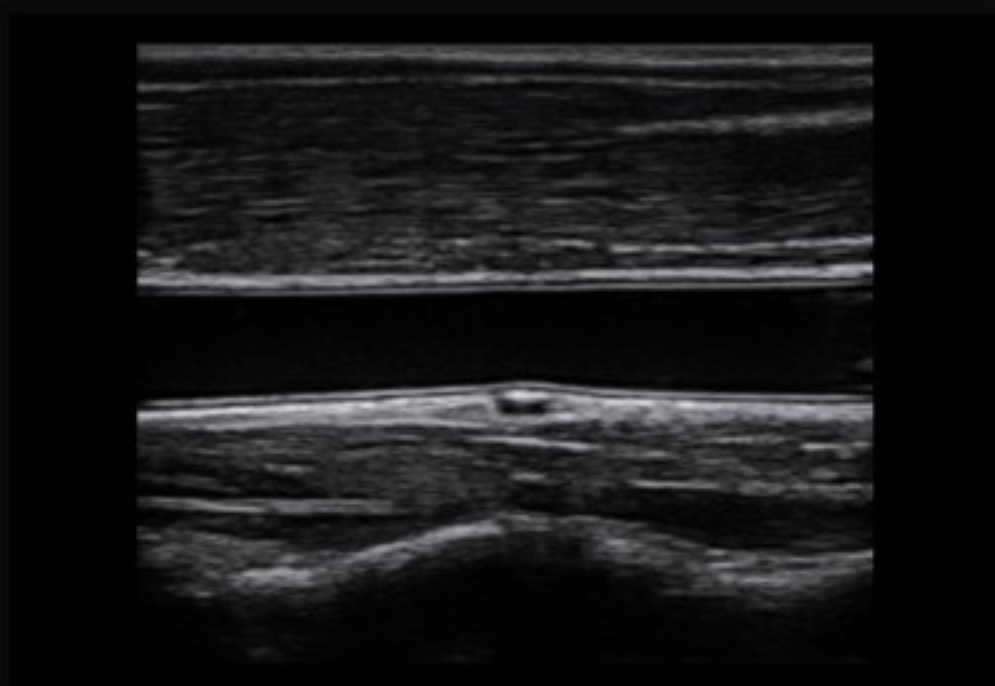
Image Gallery



Kidney



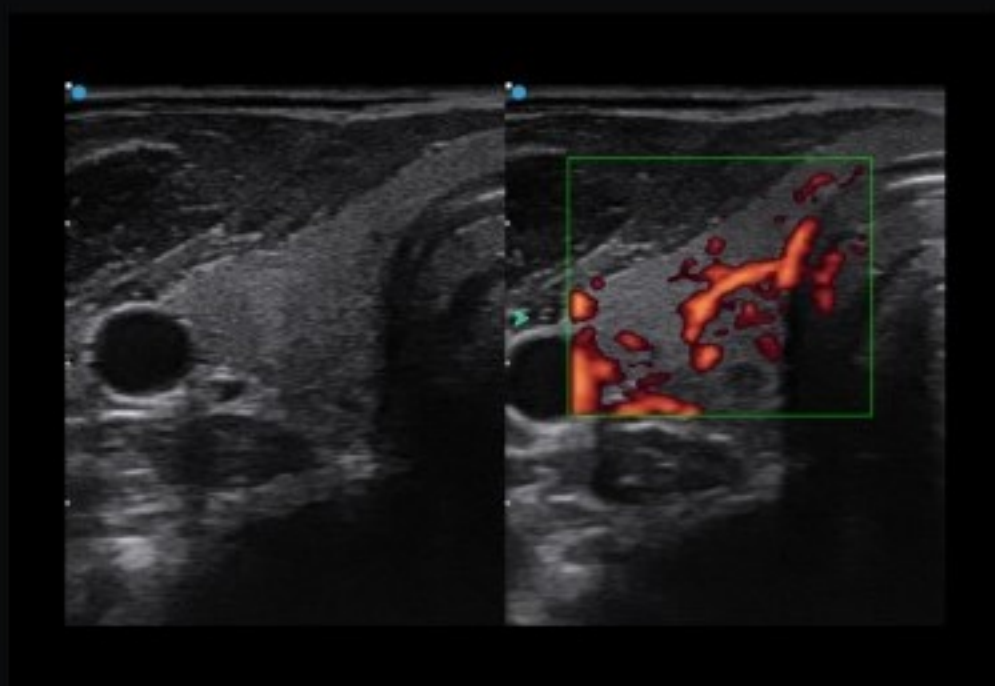
Prostate



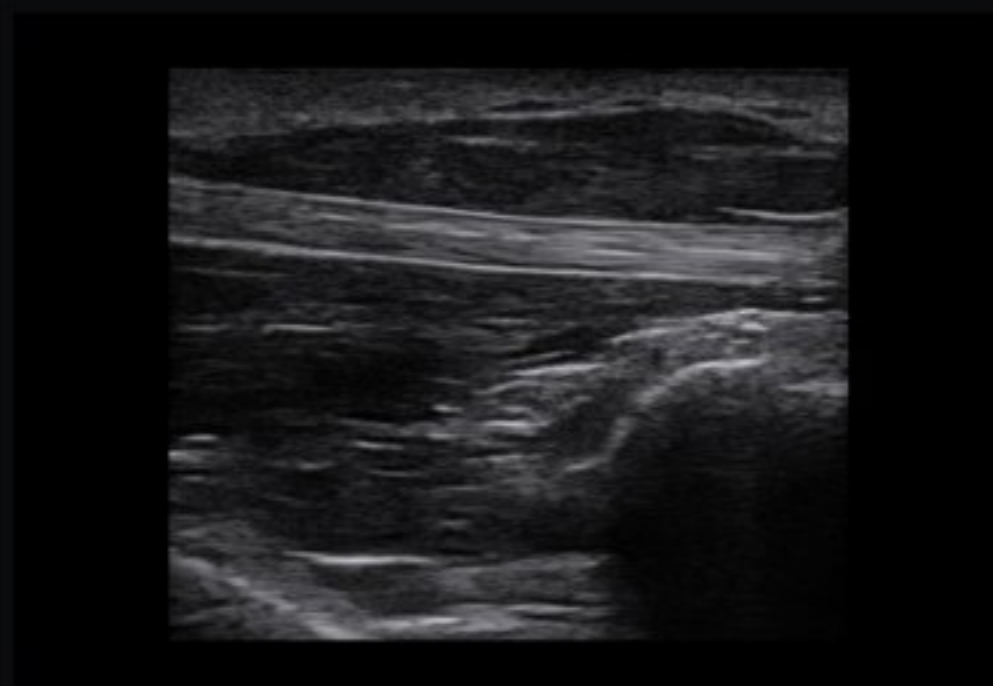
Carotid



PW



Thyroid CPA



Nanoview

40 **SINCE 1978** YRS



Shantou Institute of Ultrasonic Instruments Co., Ltd.

HEADQUARTERS:

Shantou Institute of Ultrasonic Instruments Co., Ltd.
Add: No.77, Jinsha Road, Shantou 515041 Guangdong, China
Tel: 86-754-8825 0150 Fax: 86-754-8825 1499
E-mail: siui@siui.com

HONG KONG OFFICE:

Shantou Institute of Ultrasonic Instruments (HK) Co., Ltd.
Add: Room 2101, Tung Chiu Commercial Center
193 Lockhart Road, Wanchai, Hong Kong
Tel: 852-2891 6722 Fax: 852-2891 6723

www.siui.com

